



North Tonawanda City School District  
 Administrative Offices  
 176 Walck Road  
 North Tonawanda, NY 14120

[www.ntschoools.org](http://www.ntschoools.org)

Important  
 Dates/Information  
 2018-2019  
 Elementary School

**Benchmark Data/Assessment Windows**

You will be using the Kindergarten Assessment, STAR program for this data.

The STAR program will be available to help you screen and progress monitor your children. While some of you may wish to use this more than others, please keep in mind it can be a quick and easy way to monitor student growth every 5 weeks as well.

Window for testing to get Base Line Data for Grades K - 6 is from:

- **Fall:** Monday, September 24 – Thursday, October 11
- **Winter:** Monday, January 7 – Thursday, January 24
- **Spring:** Monday, May 6 – Thursday, May 23

This year's APPR will be generated with observations and a district-wide SLO for all teachers.

Classroom and special area teachers who do not have a State Assessment and who do not receive a state provided growth score get the district-wide SLO using the combination of assessments (ELA Regents, US History Regents, Biology Regents, 4th Grade Science).

Report Cards Kdg. – 6 <sup>th</sup>	eSchool Grade Entry Access	Report Cards Issued
MP 1 - Ends – Friday, November 2	9/5 -11/12	Friday, November 16, 2018
MP 2 – Ends – Friday, February 22	11/5 -3/1	Friday, March 8, 2019
MP 3 – Ends – Friday, June 14	2/25 -6/19	Tuesday, June 25, 2019

Parent Teacher/Conference Days	Evening Conference Days
Wednesday, October 24, 2018 (1/2 Day)	
	Evening Conference in November - Check with Principal for specific date.
Wednesday, November 14, 2018 (½ Day)	
Wednesday, November 28, 2018 (½ Day)	
	Evening Conferences in March - Check with Principal for specific date.
Friday, March 8, 2019 ( ½ Day)	
<b>Student Early Release and ½ Staff Development Day K-6</b>	
Wednesday, October 31, 2018 (½ Day)	

## User ID/Passwords

### Office 365: <https://login.microsoftonline.com/>

- User Name: work email/computer server login
- Password: work email/server login password

### Brain Pop:

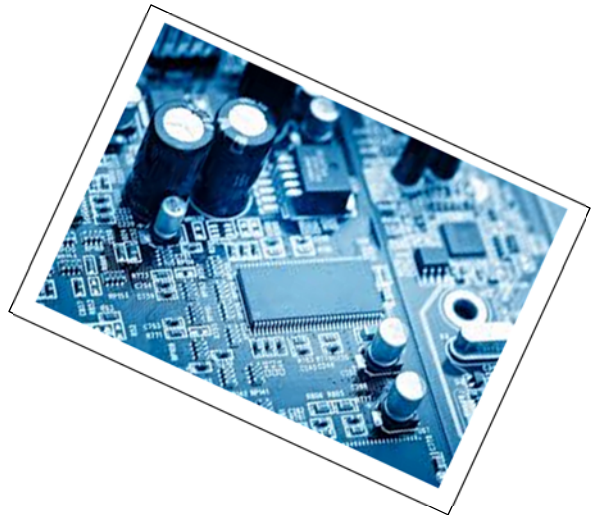
- User Name: nt
- Password: student

### Enchanted Learning:

- User Name: nt
- Password: student

### Pearson Successnet:

- User Name: email address
- Password: User Choice



## WNYRIC Online Academy – Must Register with Both Erie 1 BOCES and your MY Learning Plan Account

\*Returning Staff received account credentials last year

\*\*New staff received an email with their account credentials on September 19, 2018.

1. Once your username has been created, you will receive an email with the subject "WNYRIC Online Academy - Erie 1 BOCES/WNYRIC: Enrollment Confirmation."
2. Open this email, and click on the link entitled "Set up a password."
3. This will bring you to our online learning platform at <http://wnyric.desire2learn.com>. Follow the instructions to set up your own password with the username provided in the email.
4. Once you log in to the online platform, you will see a list of courses in a spreadsheet. Click on the dates to register for courses. Registering will ensure that you receive the proper CTLE certificates, if needed for your certification. You may also register by going to the following links:

<https://www.e1b.org/Training-Workshops/Technology-Integration/CSLO/Workshops/Fall-2018-Online-Courses>

<https://www.e1b.org/Training-Workshops/Technology-Integration/CSLO/Workshops/Spring-2019-Online-Courses>

<https://www.e1b.org/Training-Workshops/Technology-Integration/CSLO/Workshops/Webinars-2018-19>